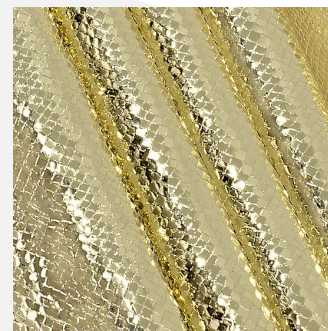


PELLAMI  
due c S.p.A.



- LWG APPROVED TRADER -

## Product data sheet

<b>Commercial name of the article:</b>	BLADE VIPERA
<b>Intended use:</b>	FOOTWEAR
<b>General characteristics of the product:</b>	GOAT MIRROR LAMINATED
<b>Raw type</b>	GOAT
<b>Scientific Name</b>	CAPRA AEGAGRUS HIRCUS
<b>Origin</b>	EXTRA CEE-INDIA
<b>Tanning</b>	CHROME
<b>Dyeing</b>	NOT DYE THROUGH
<b>Finishing</b>	LAMINATED
<b>Leather appearance</b>	GLOSSY
<b>Size</b>	Sqmt 0,35/0,65
<b>Thickness</b>	mm 0,8/1,0
<b>Selection</b>	I 60%-II 30%-III 10%
<b>MOQ</b>	NO MINIMUM

### Product compliance with standards, laws, regulations

The Product is identified in point 4.1.1 of the EN 15987: 2015 standard and complies with the following standards and regulations:

- **Washington Convention** of 03/03/1973 ratified with law 19/12/1975 n ° 874 and implemented with EC Regulation 388/97 and subsequent amendments. relating to the protection of wild flora and fauna species by controlling their trade;
- **EC Regulation 1907/2006 (REACH)**: Annex XIV and Annex XVII;
- EEC Directive 93/42 on medical devices implemented by D.L. n. 46 of 24/02/97;
- Chemical characteristics of acceptability provided for by UNI 10594 and UNI 10826.

**IMPORTANT NOTICE:** the compliance of the product with the eco-toxicological requirements referred to in the aforementioned regulation EC 1907/2006 is guaranteed on the leather as sold by the tannery. So far as the user apply further chemical treatments to the leather, he must ensure, in order to maintain compliance with the aforementioned requirements, that the substances used comply with the aforementioned regulation and that they do not interact negatively with those already bound to the fibers of the leather. Otherwise Pellami Due C spa is not legally liable for the loss of conformity of its products.

## Note

- 1 - The technical characteristics of the product not expressly referred to in this document are to be considered not applicable or not determined by the manufacturer. The customer must specify, prior to the order, any additional requirements desired and not included in this technical data sheet.
- 2 - The performance requirements of the product express average values found on our standard productions.
- 3 - Pellami Due C guarantees compliance with the declared thickness and size ranges however, given the natural origin of the product, it is possible to find in the supply batches marginal shares of leathers whose thickness and / or size range may differ slightly from the 'declared interval of 0.1 mm and 0.023 m2 respectively on the minimum and maximum values. These leathers cannot be the subject of a complaint by the customer.
- 4 - Pellami Due C reserves the right to make changes to its products at any time and without prior notice, to make them compliant with any new rules, laws and regulations concerning work, product and environmental safety issued by the competent Authorities.
- 5 - Pellami Due C excludes on all its articles the applicability of physical and chemical tests after any artificial aging process performed with any methodology. In particular, for products with a laminated finish, no artificial aging process is applicable.
- 6 - Any complaints for defects must be notified in writing, without affecting the original percentages of the mix of choices and before cutting and, in any case, starting processing.

## Operating instructions

Leather is a natural product, therefore for its use the following precautions must be taken:

- Work it at the right degree of humidity and at low temperatures to prevent it from decreasing the tear resistance.
- Avoid the use of organic solvents as they generally alter the chemical-physical characteristics of the product and the finishing anchors.
- For laminates, the use of adhesives and / or impregnants containing solvents, even if in traces, is not allowed given the proven "delaminating" action that this class of substances is able to exert on metal sheets even for a long time distance of time.
- Do not impregnate toe puff and / or counters with substances containing organic solvents, even if in traces, and let them dry as much as possible before application.
- On varnished leathers in particular, any organic solvents present in the adhesives, impregnants, etc. they can cause a detachment of the paint film, definitively compromising the aesthetic and functional characteristics of the products.
- Store the hides without overlapping loads on the packages supplied by the tannery to avoid the formation of permanent creases.
- The microclimatic conditions of the storage rooms must be at the following optimal values: Relative Humidity 50/65%
- Temperature 15/25 ° C - and ensure good ventilation of the rooms. However, it is not possible to predict with absolute precision the behavior of the leather in its multiple and different conditions of use, therefore it is good practice to test the leather by making prototypes according to the technological cycle envisaged by the customer.

For the maintenance of the artifacts, take the following general precautions:

- Store them in dry, well-ventilated places and at room temperature.
- The use of products intended for the cleaning, protection and polishing of leathers normally has no contraindications, however it is advisable to carry out a preliminary test of the product used on a hidden point of the product. Any complaints for defects must be notified in writing, within eight days of receipt, without affecting the original percentages of the mix of choices and before cutting or, in any case, starting the goods. The recognition of any defects by Pellami Due C implies the replacement of the defective goods or the termination of the contract without acknowledgment of damages.
- Warning: the use of non-specific products for the maintenance of leather products can cause cracks or discolouration on the treated surface.
- Stains from water-soluble substances (e.g. soft drinks, coffee, tea, milk, jam, etc.) can be removed from the surface by blotting with absorbent paper without rubbing. Subsequently, with a damp white cloth, act gently from the outside towards the inside of the stain, leaving it to dry in the air, then re-polish with a soft cloth. Stains from greasy substances (for example oil, ketchup, mayonnaise, chocolate, etc.) can always be removed with absorbent paper, taking care not to press to prevent dirt from getting into the skin. With a clean white cloth soaked in a specific detergent solution, available in specialized stores, gently wipe from the outside to the inside of the stain. Do not wet the surface of the skin too much and absorb any excess solution with a clean dry cloth. Allow to air dry. Removal of both types of dirt should be done as quickly as possible.
- Warning: do not dry the skin in sunlight or near heat sources!